

The background image is a photograph of a coastal landscape. In the foreground, there is a sandy path or dune area with patches of dry, yellowish-brown grass and some small, dark shrubs. The path leads towards the right side of the frame. In the middle ground, there is a flat, sandy area that appears to be a beach or a tidal flat, with some small pools of water or wet sand. The horizon is flat and extends across the width of the image. The sky is filled with large, white, fluffy clouds, and the overall lighting suggests a bright, sunny day.

# Outer Dowsing Offshore Wind

## Environmental Statement

### Chapter 29 Socio-Economic Characteristics

### Volume 2 Figures

Date: February 2025

Document Reference: 6.2.29

Pursuant to APFP Regulation: 5(2)(a)

Rev: 2.0



Company:		Outer Dowsing Offshore Wind		Asset:		Whole Asset	
Project:		Whole Wind Farm		Sub Project/Package:		Whole Asset	
Document Title or Description:		Chapter 29 Socio-Economic Characteristics					
Internal Document Number:		PP1-ODOW-DEV-CS-REP-0137_02		3 <sup>rd</sup> Party Doc No (If applicable):		N/A	
Rev No.	Date	Status / Reason for Issue	Author	Checked by	Reviewed by	Approved by	
01	March 2024	DCO Application	GoBe	GoBe	Shepherd & Wedderburn	Outer Dowsing	
02	February 2025	Examination ES Update	GoBe	GoBe	Shepherd & Wedderburn	Outer Dowsing	

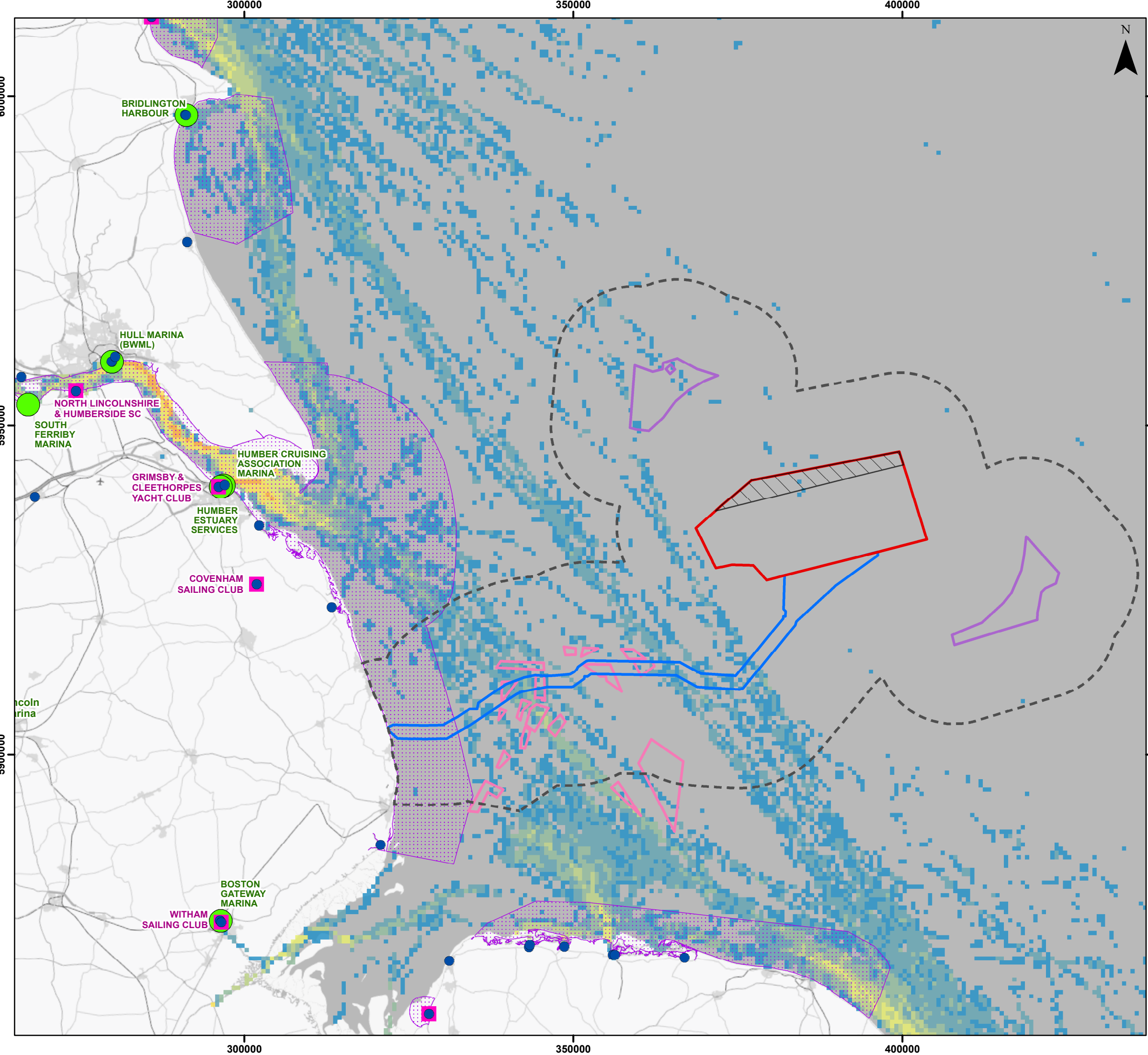
## Change Log

- Examination Update: updates to reflect, where relevant: clarifications to date in Examination; correcting errata; additional commitments made through Examination; and changes to status of or addition of cumulative projects.

## Table of Figures

- Figure 29.1 Marine sailing and boating (document reference 6.2.29.1)
- Figure 29.2 Recreational Vessels within the Shipping and Navigation Study Area (document reference 6.2.29.2)
- Figure 29.3 14-Day Offshore ECC Vessel Traffic Data by Vessel Type (document reference 6.2.29.3)
- Figure 29.4 Marine recreational angling (document reference 6.2.29.4)
- Figure 29.5 Scuba diving and general marine recreation activities (document reference 6.2.29.5)





### Legend

- Array Area
- Offshore Restricted Build Area
- Offshore Export Cable Corridor
- Study Area (15km)
- Artificial Nesting Structure Area
- Biogenic Reef Restoration Area
- RYA Club
- RYA Training Centre
- Marina
- General Boating Area

**Vessel usage (summer 2014 and 2017) implied by Automatic Identification System intensity**

- Low
- Low
- Low
- Low
- Low
- Low
- Low
- High

RYA, Marinas, Offshore Routes, Boating Areas and AIS Intensity  
© Data reproduced under licence from the Royal Yachting Association

Coordinate System: WGS 1984 UTM Zone 31N

0 10 20 km

Scale: 1:550,000

A3 Page Size

Environmental Statement Version 2 Deadline 4a

Marine Sailing and Boating

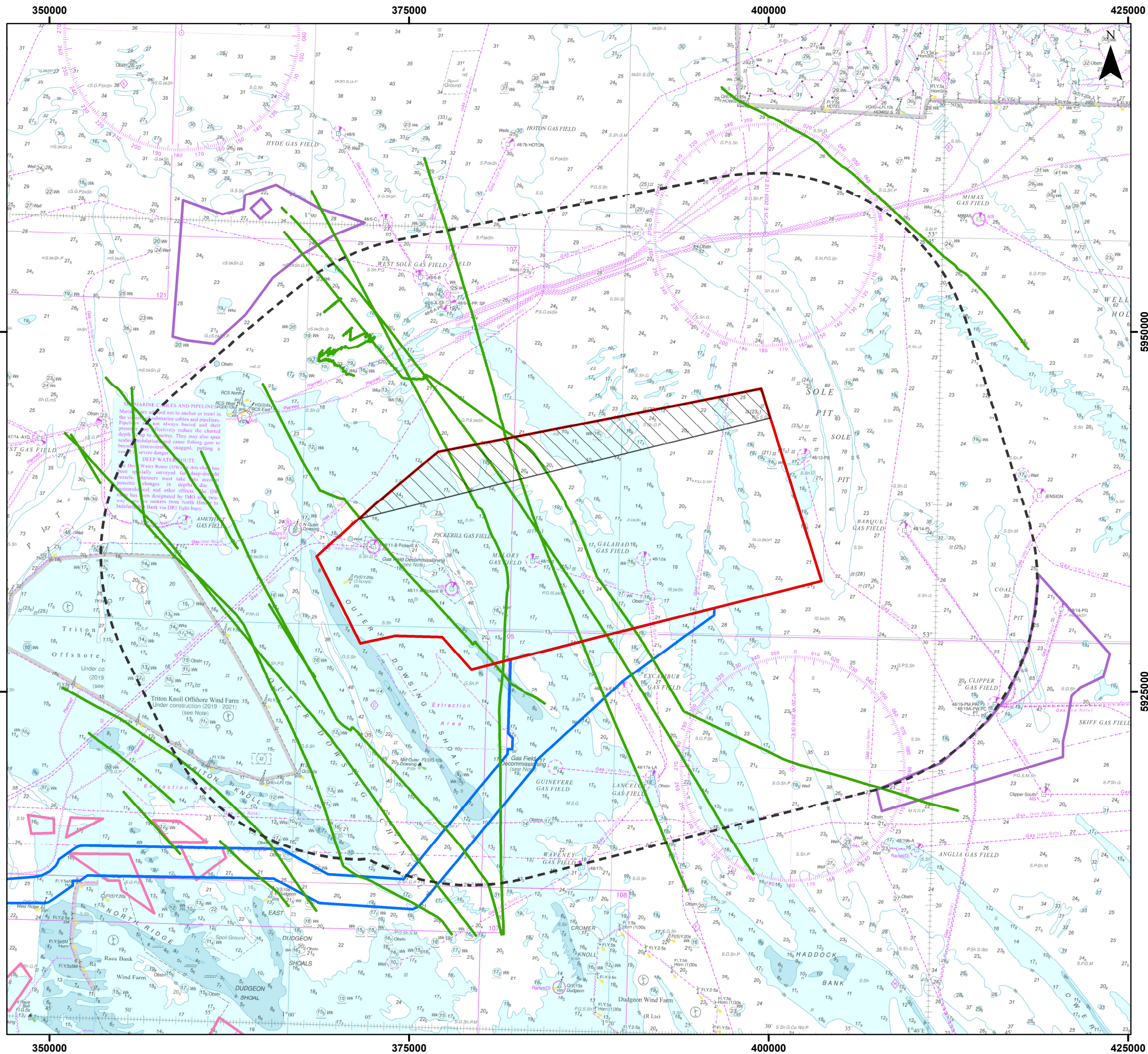
Figure 29.1

Date: 26/02/2025  
Produced By: BPHB  
Revision: 2.0








Contains ESRI Basemapping;  
Contains OS data © Crown  
Copyright and database right  
2020

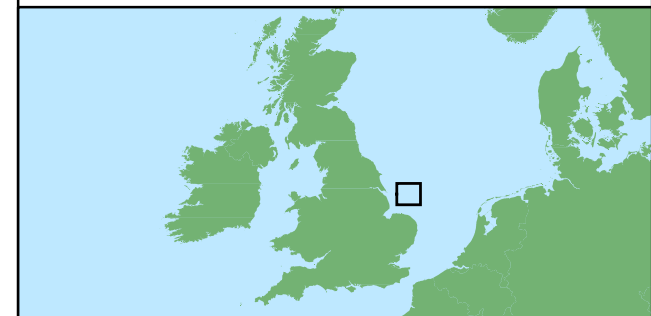
Document Path: Z:\GIS\GIS Projects\0152 Outer Dowsing EIA\GIS\Figures\Deadline 4a\Socio Economic\ODOW\_0152\_SE\_Fig29.1 Marine Sailing and Boating.v3.mxd





## Legend

-  Array Area
-  Offshore Restricted Build Area
-  Offshore Export Cable Corridor
-  Artificial Nesting Structure Area
-  Biogenic Reef Restoration Area
-  Shipping and Navigation Study Area
-  Recreational Vessel Type



Coordinate System: WGS 1984 UTM Zone 31N

Scale: 1:250,000

A3 Page Size

Environmental Statement Version 2 Deadline 4a

## Recreational Vessels within the Shipping and Navigation Study Area

Figure 29.2

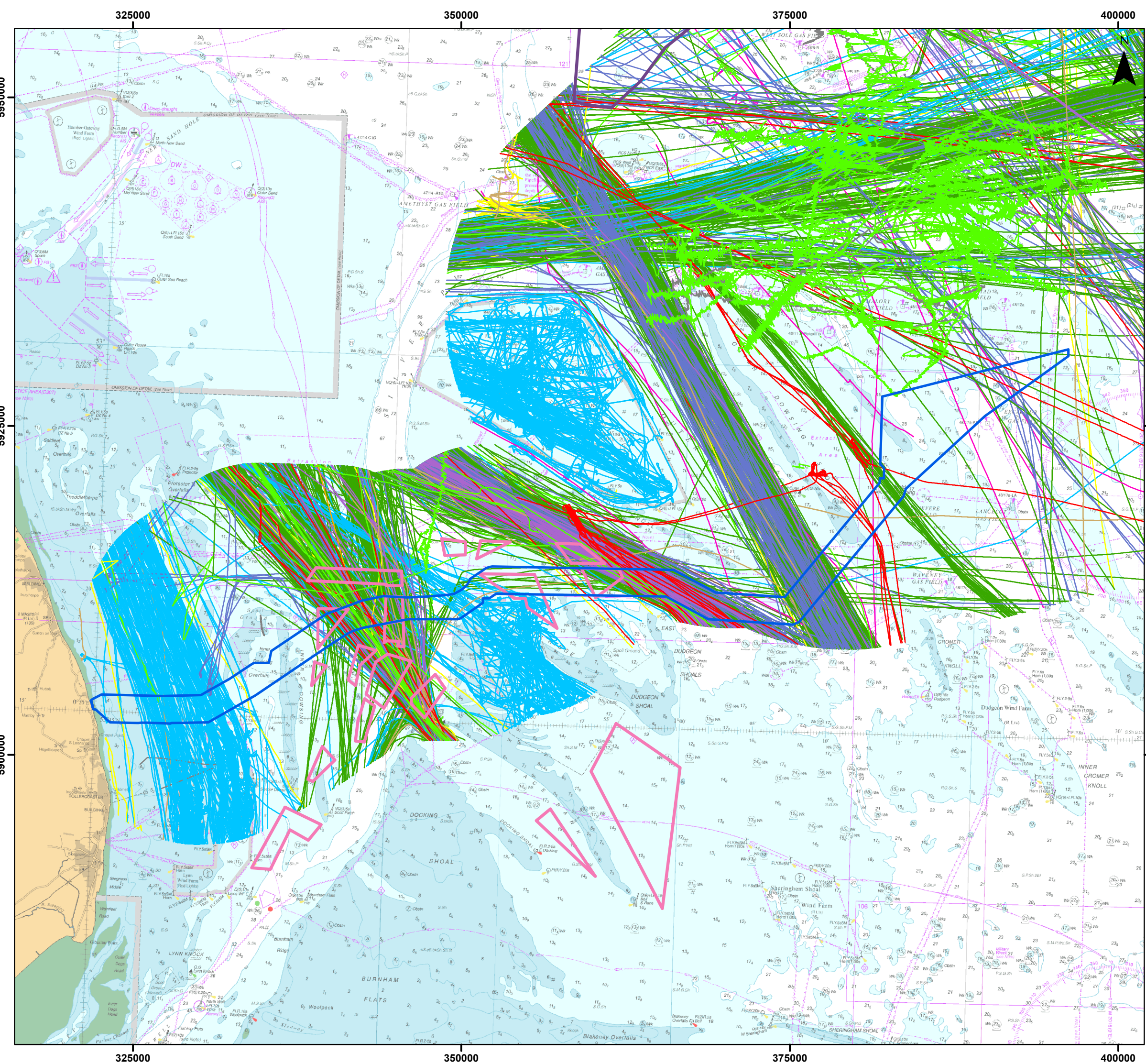


Date: 26/02/2025  
Produced By: BPHB  
Revision: 2.0

Contains ESRI Basemapping;







### Legend

- Offshore Export Cable Corridor
- Artificial Nesting Structure Area
- Biogenic Reef Restoration Area

### Vessel Type

- Fishing
- Military
- Dredging/Underwater Ops
- Tug
- Passenger
- Cargo
- Tanker
- Other
- Recreational
- Oil and Gas
- Wind Farm
- Unspecified

Coordinate System: WGS 1984 UTM Zone 31N

0 5 10 km

Scale: 1:275,000

A3 Page Size

Environmental Statement Version 2 Deadline 4a

14-Day Offshore ECC Vessel Traffic Data by Vessel Type

Figure 29.3

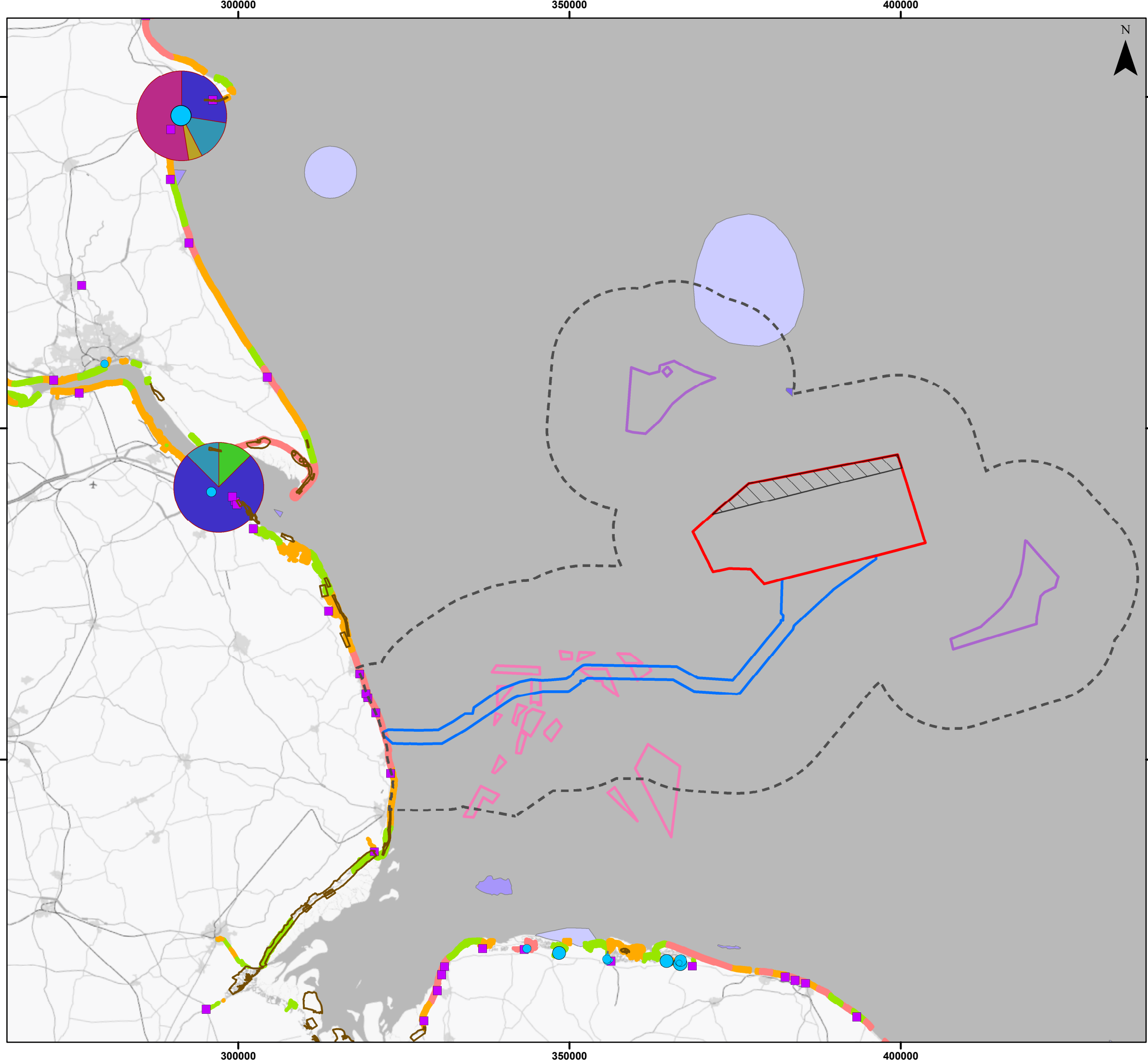
OUTER DOWSING OFFSHORE WIND

Date: 26/02/2025  
Produced By: BPHB  
Revision: 2.0

Contains ESRI Basemapping:

Document Path: Z:\GIS\GIS - Projects\0152 Outer Dowsing EIA\GIS\Figures\Deadline 4a\Social Economic\ODOW\_0152\_SE\_Fig29.3\_Vessel\_Type\_v3.mxd





**Legend**

- Array Area
- Offshore Restricted Build Area
- Offshore Export Cable Corridor
- Study Area (15km)
- Artificial Nesting Structure Area
- Biogenic Reef Restoration Area
- Bait collection
- Slipways
- Angling boats on moorings, harbours & marinas
  - 1
  - 5
  - 10
- Angling trips per km2
  - < 20%
  - 20% - 40%
  - 40% - 60%
  - 60% - 80%
  - > 80%
- Shore angling activity
  - Low
  - Medium
  - High
- Charter boat species captured
  - cod
  - bass
  - skate ray
  - flatfish
  - breem
  - sport shark
  - sport\_shar
- Charter boat angler trips per year
  - three
  - twenty
  - sixty
- Grounds favoured by charter boats
  - banks
  - estuary
  - ground
  - rough
  - shark
  - wreck

Datasets obtained from Marine Management Organisation, MMO1163, Year 2020

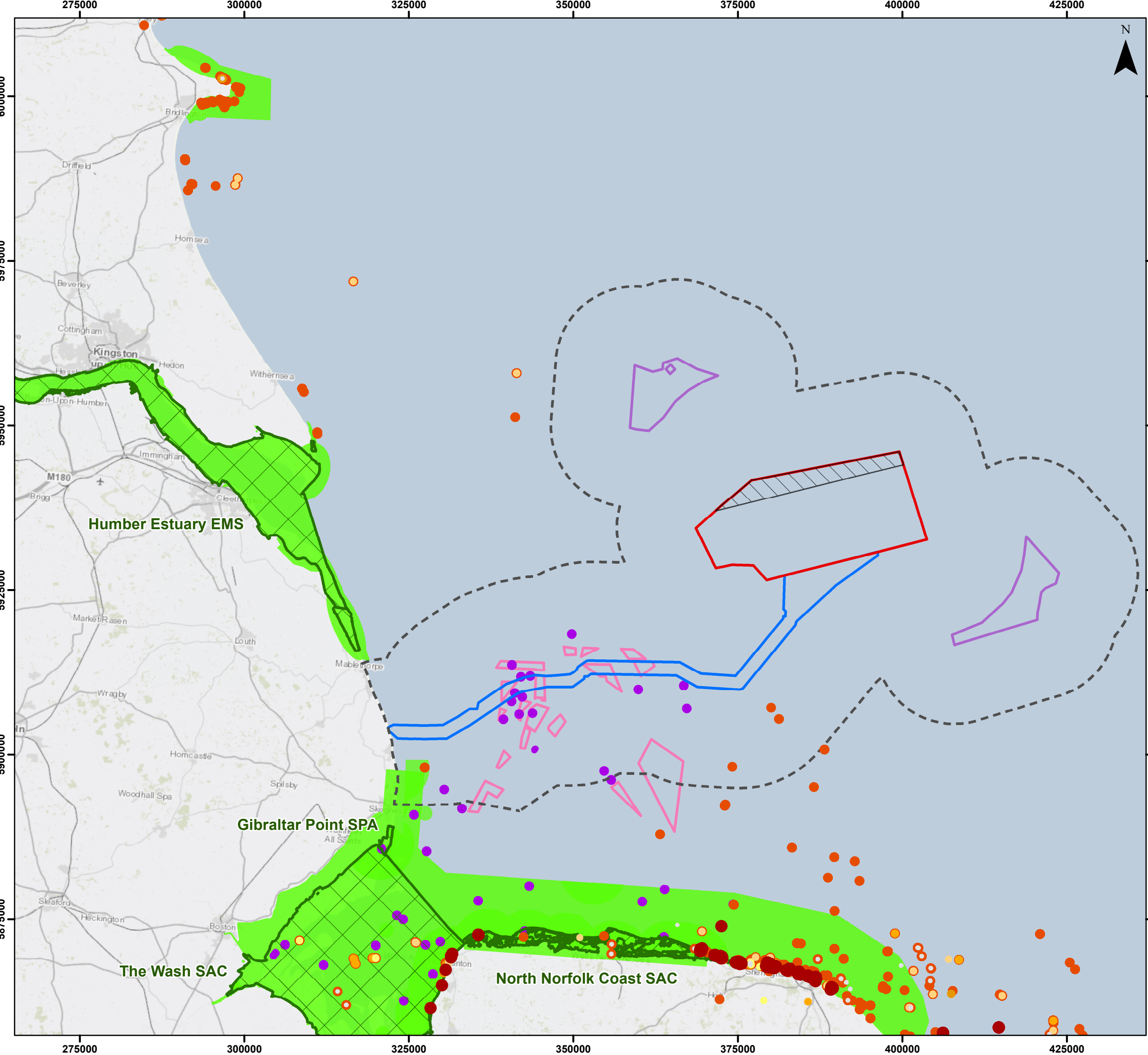
Coordinate System: WGS 1984 UTM Zone 31N  
0 10 20 km  
Scale: 1:550,000  
A3 Page Size

Environmental Statement Version 2 Deadline 4a  
Marine Recreational Angling

Figure 29.4







### Legend

- Array Area
- Offshore Restricted Build Area
- Offshore Export Cable Corridor
- Study Area (15km)
- Artificial Nesting Structure Area
- Biogenic Reef Restoration Area
- Designations
- General Recreation (MMO 2019; 2021)
- Estimated scuba diving areas (MMO 2021)

#### Recorded Dives by Year (Seasearch)

- 2014
- 2015
- 2016
- 2017
- 2018
- 2019
- 2020

Coordinate System: WGS 1984 UTM Zone 31N

0 10 20 km

Scale: 1:550,000

Environmental Statement Version 2 Deadline 4a

Scuba Diving and General Marine Recreation Activities

Figure 29.5

OUTER DOWING  
OFFSHORE WIND

Date: 26/02/2025  
Produced By: BPHB  
Revision: 2.0

GoBe

Contains ESRI Basemapping;  
Contains OS data © Crown  
Copyright and database right  
2020

Document Path: Z:\GIS\GIS - Projects\0152 Outer Dowing EIA\GIS\Figures\Deadline 4a\Socio Economic\ODOW\_0152\_SE\_Fig29.5 Marine Recreation v3.mxd